

Manometri e vuotometri cassa metallica

Gauges and vacuum gauges steel case

Manometer und Vakuummeter Stahl Gehäuse

Dati tecnici manometri a secco attacco posteriore (serie MN60)

Gauges center back connection technical data (MN60 series)

Technischen Daten der Manometer zuruck Angriff (Serie MN60)

Applicazioni

Per aria o acqua adatti a tutti gli impieghi dove non ci sono agenti corrosivi.
Pneumatica, idraulica, condizionamento, medicali.

Applications

Suitable for all process gaseous and liquid don't attack copper alloy parts. Pneumatics, Heating, ventilation, air-conditioning, Medical engineering.

Anwendungen

Für Luft oder Wasser geeignet für alle Anwendungen, bei denen es ätzend.
Pneumatik, Hydraulik, Klimaanlage, medical.

Descrizione

Manometro costruito secondo Norme UNI EN 837.1 Cassa Metallica Verniciata NERA IP55 dn 40 - 50 - 63 mm. Trasparente in Plexiglass. Perno e movimento in OTTONE attacco POSTERIORE (ISO 228 - ISO 7/1). Quadrante in alluminio fondo bianco scala BAR nera e PSI rossa (doppia scala esclusi mano vuotometri). Classe di precisione 2,5 - 1,6% Lancetta in Alluminio.

Description

Pressure gauge made according UNI EN 837.1 norms BLACK steel case dial 40 - 50 - 63 mm.
BRASS movement and pivot BACK (ISO 228 - ISO 7/1) connection. Aluminum dial white background black BAR scale and red PSI one (double scale except compound gauge). Accuracy 2.5 - 1.6% - Aluminum index.

Beschreibung

Gebaut nach UNI EN 837.1, Bargeld Metallica SCHWARZ lackiert IP55 dn 40 - 50 - 63 mm. Transparent Plexiglas. Stift und Bewegung in MESSING. Angriff ZURÜCK (ISO 228 - ISO 7/1). Wählen Sie aus Aluminium unten, Maßstab BAR schwarz und rot PSI (zwei Skalen Vakuummeter ausgeschlossen). Genauigkeitsklasse 2,5 auf 1,6% - Hand aus Aluminium.

Esercizio

Temperatura d'esercizio -10 / +60 °C
Sovrappressione 25% fino a 60 bar, 15% oltre

Working

Operating temperature +14 / +140 °F
Overpressure 25% until 60 bar, 15% over

Betriebs

Betriebstemperatur -10 / +60 °C
Überdruck bis 60 bar, mehr als 15%

Varianti

Scale Normalizzate: Vuotometro -1 / 0 Bar+CmHg;
Manovuotometro -1+0,6; -1+1,5; -1+3; -1+5; -1+9; -1+15 solo Bar; 0,6; 1; 1,6; 2,5; 4; 6; 10; 12; 16; 25; 40; 60; 100; 160; 250; 315; 400 Bar + Psi

Variants

Normalized scale: gauge compound -1 / 0 Bar+CmHg;
Water pressure gauge -1+0,6; -1+1,5; -1+3; -1+5; -1+9; -1+15 solo Bar; 0,6; 1; 1,6; 2,5; 4; 6; 10; 12; 16; 25; 40; 60; 100; 160; 250; 315; 400 Bar + Psi

Varianten

Maßstab normalisierten Vakuummeter -1 / 0 Bar+CmHg;
Mano- Vakuummeter -1+0,6; -1+1,5; -1+3; -1+5; -1+9; -1+15 nur bar; 0,6; 1; 1,6; 2,5; 4; 6; 10; 12; 16; 25; 40; 60; 100; 160; 250; 315; 400 Bar + Psi

Opzioni prodotto

Filetto NPT ANSI B.1.20.1, Cassa Inox AISI 304 o cromata, Sgrassatura uso ossigeno, scale e/o attacchi personalizzati, loghi, settori colorati, lancetta rossa ISPEL di riferimento, saldatura forte per alte temperature.

Product options

NPT ANSI B.1.20.1 thread, Clean for oxygen service, customize range, scale or logo; Colored sector, red index, welding for high temperature.

Produkt-Optionen

NPR ANSI B.1.20.1 Gewinde, Edelstahl AISI 304 bar oder Chrom oder Entfetten verwendet Sauerstoff, Treppen und / oder Anhänge individuelle Logos, Felder rot gefärbt Hand ISPEL, starke Schweißen für Hochtemperaturanwendungen.

MN 60

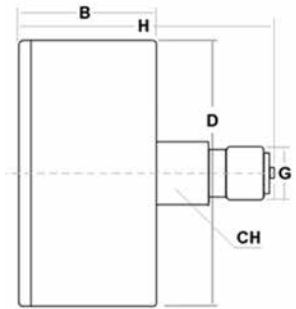


Manometri a secco attacco posteriore

Gauges center back connection
Manometer zuruck Angriff

Codice/Code	Ø	Scala (bar) Range	Attacco" Connection"	Precisione Accuracy	Icon
VUOTOMETRO - VACUUM GAUGE - Vakuummeter					
MN604018099P	40	-1 ÷ 0	R1/8	CL2.5	1
MANOMETRI - GAUGES - Manometer					
MN604018001P	40	0 ÷ 1	R1/8	CL2.5	1
MN604018106P	40	0 ÷ 1.6	R1/8	CL2.5	1
MN604018205P	40	0 ÷ 2.5	R1/8	CL2.5	1
MN604018004P	40	0 ÷ 4	R1/8	CL2.5	1
MN604018006P	40	0 ÷ 6	R1/8	CL2.5	1
MN604018010P	40	0 ÷ 10	R1/8	CL2.5	1
MN604018012P	40	0 ÷ 12	R1/8	CL2.5	1
MN604018016P	40	0 ÷ 16	R1/8	CL2.5	1
MN604018025P	40	0 ÷ 25	R1/8	CL2.5	1
MN604018040P	40	0 ÷ 40	R1/8	CL2.5	1
MN604018060P	40	0 ÷ 60	R1/8	CL2.5	1
MN604018100P	40	0 ÷ 100	R1/8	CL2.5	1
MN604018160P	40	0 ÷ 160	R1/8	CL2.5	1
VUOTOMETRO - VACUUM GAUGE - Vakuummeter					
MN605018099P	50	-1 ÷ 0	R1/8	CL2.5	1
MANOMETRI - GAUGES - Manometer					
MN605018001P	50	0 ÷ 1	R1/8	CL2.5	1
MN605018106P	50	0 ÷ 1.6	R1/8	CL2.5	1
MN605018205P	50	0 ÷ 2.5	R1/8	CL2.5	1
MN605018004P	50	0 ÷ 4	R1/8	CL2.5	1
MN605018006P	50	0 ÷ 6	R1/8	CL2.5	1
MN605018010P	50	0 ÷ 10	R1/8	CL2.5	1
MN605018012P	50	0 ÷ 12	R1/8	CL2.5	1
MN605018016P	50	0 ÷ 16	R1/8	CL2.5	1
VUOTOMETRO - VACUUM GAUGE - Vakuummeter					
MN605014099P	50	-1 ÷ 0	R1/4	CL2.5	1
MANOMETRI - GAUGES - Manometer					
MN605014001P	50	0 ÷ 1	R1/4	CL2.5	1
MN605014106P	50	0 ÷ 1.6	R1/4	CL2.5	1
MN605014205P	50	0 ÷ 2.5	R1/4	CL2.5	1
MN605014004P	50	0 ÷ 4	R1/4	CL2.5	1
MN605014006P	50	0 ÷ 6	R1/4	CL2.5	1
MN605014010P	50	0 ÷ 10	R1/4	CL2.5	1
MN605014012P	50	0 ÷ 12	R1/4	CL2.5	1
MN605014016P	50	0 ÷ 16	R1/4	CL2.5	1
MN605014025P	50	0 ÷ 25	R1/4	CL2.5	1
VUOTOMETRO - VACUUM GAUGE - Vakuummeter					
MN606314099P	63	-1 ÷ 0	G1/4	CL2.5	1
MANOMETRI - GAUGES - Manometer					
MN606314001P	63	0 ÷ 1	G1/4	CL2.5	1
MN606314106P	63	0 ÷ 1.6	G1/4	CL2.5	1
MN606314205P	63	0 ÷ 2.5	G1/4	CL2.5	1
MN606314004P	63	0 ÷ 4	G1/4	CL2.5	1
MN606314006P	63	0 ÷ 6	G1/4	CL2.5	1
MN606314010P	63	0 ÷ 10	G1/4	CL2.5	1
MN606314012P	63	0 ÷ 12	G1/4	CL2.5	1
MN606314016P	63	0 ÷ 16	G1/4	CL2.5	1
MN606314025P	63	0 ÷ 25	G1/4	CL2.5	1
MN606314040P	63	0 ÷ 40	G1/4	CL2.5	1
MN606314060P	63	0 ÷ 60	G1/4	CL2.5	1
MN606314100P	63	0 ÷ 100	G1/4	CL2.5	1
MN606314160P	63	0 ÷ 160	G1/4	CL2.5	1
MN606314250P	63	0 ÷ 250	G1/4	CL2.5	1
MN606314315P	63	0 ÷ 315	G1/4	CL2.5	1
MN606314400P	63	0 ÷ 400	G1/4	CL2.5	1

Ø	B	D	H	G"	CH	Kg
40	22	41	40	R1/8	11	0.052
50	27	51.5	51	R1/4	14	0.09
50	27	51.5	44	R1/8	14	0.086
63	22	62	49	G1/4	14	0.102



Manometri e vuotometri cassa metallica

Gauges and vacuum gauges steel case

Manometer und Vakuummeter Stahl Gehäuse

Dati tecnici manometri a secco attacco posteriore con flangia 3 fori (serie MN62)

Gauges center back connection with 3 holes flange technical data (MN62 series)

Technischen Daten der Manometer zuruck Angriff mit Frontring (Serie MN62)

Applicazioni

Per aria o acqua adatti a tutti gli impieghi dove non ci sono agenti corrosivi.
Pneumatica, idraulica, condizionamento, medicali.

Descrizione

Manometro costruito secondo Norme UNI EN 837.1 Cassa Metallica Verniciata NERA IP55 dn 40 - 50 - 63 mm trasparente in Plexiglass. Perno e movimento in OTTONE attacco POSTERIORE con FLANGIA (ISO 228 - ISO 7/1) Quadrante in alluminio fondo bianco scala BAR nera e PSI rossa (doppia scala esclusi mano vuotometri). Classe di precisione 2,5 - 1,6% - Lancetta in Alluminio.

Esercizio

Temperatura d'esercizio -10 / +60 °C
Sovrappressione 25% fino a 60 bar, 15% oltre

Varianti

Scale Normalizzate: Vuotometro -1 / 0 Bar + CmHg; Mano-vuotometro -1+0,6; -1+1,5; -1+3; -1+5; -1+9; -1+15 solo Bar; 0,6; 1; 1,6; 2,5; 4; 6; 10; 12; 16; 25; 40; 60; 100; 160; 250; 315; 400 Bar + Psi

Opzioni prodotto

Filetto NPT ANSI B.1.20.1, Cassa Inox AISI 304 o Cromata, Sgrassati per uso ossigeno, scale e/o attacchi personalizzati, loghi, settori colorati, lancetta rossa ISPEL di riferimento, saldatura forte per alte temperature.

Applications

Suitable for all process gaseous and liquid don't attack copper alloy parts. Pneumatics, Heating, ventilation, air-conditioning, Medical engineering.

Description

Pressure gauge made according UNI EN 837.1 norms BLACK steel case dial 40 - 50 - 63 mm.
BRASS movement and pivot BACK (ISO 228 - ISO 7/1) connection with panel FLANGE - Aluminum dial White background Black BAR scale and Red PSI one (double scale except compound gauge) - Accuracy 2,5 - 1,6% - Aluminum index.

Working

Operating temperature +14 / +140 °F
Overpressure 25% until 60 bar, 15% over

Variants

Normalized scale: gauge compound -1 / 0 Bar + CmHg; Water pressure gauge -1+0,6; -1+1,5; -1+3; -1+5; -1+9; -1+15 Bar only; 0,6; 1; 1,6; 2,5; 4; 6; 10; 12; 16; 25; 40; 60; 100; 160; 250; 315; 400 Bar + Psi

Product options

NPT ANSI B.1.20.1 thread, Clean for oxygen service, customize range, scale or logo; Colored sector, red index, welding for high temperature.

Anwendungen

Für Luft oder Wasser geeignet für alle Anwendungen, bei denen es ätzend.
Pneumatik, Hydraulik, Klimaanlage, medical.

Beschreibung

Gebaut nach UNI EN 837.1, Bargeld Metallica SCHWARZ lackiert IP55 dn 40 - 50 - 63 mm. Transparent Plexiglas. Stift und Bewegung in MESSING. ZURÜCK Angriff mit Flansch (ISO 228 - ISO 7/1). Zifferblatt Aluminium weiß, Skale BAR schwarz und rot PSI (zwei Skalen Vakuummeter ausgeschlossen). Genauigkeitsklasse 2,5 auf 1,6% - Hand aus Aluminium.

Betriebs

Betriebstemperatur -10 / +60 °C
Überdruck bis 60 bar, mehr als 15%

Varianten

Maßstab normalisierten Vakuummeter -1 / 0 Bar + CmHg; Mano- Vakuummeter -1+0,6; -1+1,5; -1+3; -1+5; -1+9; -1+15 nur Bar; 0,6; 1; 1,6; 2,5; 4; 6; 10; 12; 16; 25; 40; 60; 100; 160; 250; 315; 400 Bar + Psi

Produkt-Optionen

NPR ANSI B.1.20.1 Gewinde, Edelstahl AISI 304 bar oder Chrom oder Entfetten verwendet Sauerstoff, Treppen und / oder Anhänge individuelle Logos, Felder rot gefärbt Hand ISPEL, starke Schweißen für Hochtemperaturanwendungen.

MN 62



Manometri a secco attacco posteriore con flangia 3 fori

Gauges center back connection with 3 holes flange
Manometer zuruck Angriff mit Frontring

Ø	B	D	D1	D2	H	G"	CH	Kg
40	22	41	60.5	43	40	R1/8	11	0.074
50	27	51	73	53	51	R1/4	14	0.102
50	27	51	73	53	51	R1/8	14	0.102
63	22	62	82.5	63.5	49	G1/4	14	0.145

Codice/Code	Ø	Scala (bar) Range	Attacco" Connection"	Precisione Accuracy	
-------------	---	-------------------	----------------------	---------------------	--

VUOTOMETRO - VACUUM GAUGE - Vakuummeter

MN624018099PF	40	-1 ÷ 0	R1/8	CL2.5	1
MANOMETRI - GAUGES - Manometer					
MN624018001PF	40	0 ÷ 1	R1/8	CL2.5	1
MN624018106PF	40	0 ÷ 1.6	R1/8	CL2.5	1
MN624018205PF	40	0 ÷ 2.5	R1/8	CL2.5	1
MN624018004PF	40	0 ÷ 4	R1/8	CL2.5	1
MN624018006PF	40	0 ÷ 6	R1/8	CL2.5	1
MN624018010PF	40	0 ÷ 10	R1/8	CL2.5	1
MN624018012PF	40	0 ÷ 12	R1/8	CL2.5	1
MN624018016PF	40	0 ÷ 16	R1/8	CL2.5	1
MN624018025PF	40	0 ÷ 25	R1/8	CL2.5	1
MN624018040PF	40	0 ÷ 40	R1/8	CL2.5	1
MN624018060PF	40	0 ÷ 60	R1/8	CL2.5	1
MN624018100PF	40	0 ÷ 100	R1/8	CL2.5	1
MN624018160PF	40	0 ÷ 160	R1/8	CL2.5	1

VUOTOMETRO - VACUUM GAUGE - Vakuummeter

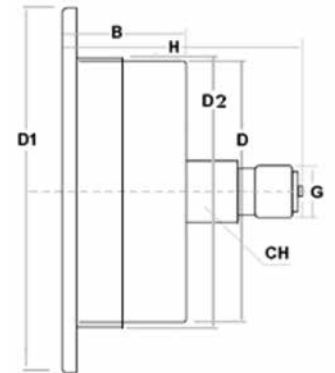
MN625018099PF	50	-1 ÷ 0	R1/8	CL2.5	1
MANOMETRI - GAUGES - Manometer					
MN625018001PF	50	0 ÷ 1	R1/8	CL2.5	1
MN625018106PF	50	0 ÷ 1.6	R1/8	CL2.5	1
MN625018205PF	50	0 ÷ 2.5	R1/8	CL2.5	1
MN625018004PF	50	0 ÷ 4	R1/8	CL2.5	1
MN625018006PF	50	0 ÷ 6	R1/8	CL2.5	1
MN625018010PF	50	0 ÷ 10	R1/8	CL2.5	1
MN625018012PF	50	0 ÷ 12	R1/8	CL2.5	1
MN625018016PF	50	0 ÷ 16	R1/8	CL2.5	1

VUOTOMETRO - VACUUM GAUGE - Vakuummeter

MN625014099PF	50	-1 ÷ 0	R1/4	CL2.5	1
MANOMETRI - GAUGES - Manometer					
MN625014001PF	50	0 ÷ 1	R1/4	CL2.5	1
MN625014106PF	50	0 ÷ 1.6	R1/4	CL2.5	1
MN625014205PF	50	0 ÷ 2.5	R1/4	CL2.5	1
MN625014004PF	50	0 ÷ 4	R1/4	CL2.5	1
MN625014006PF	50	0 ÷ 6	R1/4	CL2.5	1
MN625014010PF	50	0 ÷ 10	R1/4	CL2.5	1
MN625014012PF	50	0 ÷ 12	R1/4	CL2.5	1
MN625014016PF	50	0 ÷ 16	R1/4	CL2.5	1
MN625014025PF	50	0 ÷ 25	R1/4	CL2.5	1

VUOTOMETRO - VACUUM GAUGE - Vakuummeter

MN626314099PF	63	-1 ÷ 0	G1/4	CL2.5	1
MANOMETRI - GAUGES - Manometer					
MN626314001PF	63	0 ÷ 1	G1/4	CL2.5	1
MN626314106PF	63	0 ÷ 1.6	G1/4	CL2.5	1
MN626314205PF	63	0 ÷ 2.5	G1/4	CL2.5	1
MN626314004PF	63	0 ÷ 4	G1/4	CL2.5	1
MN626314006PF	63	0 ÷ 6	G1/4	CL2.5	1
MN626314010PF	63	0 ÷ 10	G1/4	CL2.5	1
MN626314012PF	63	0 ÷ 12	G1/4	CL2.5	1
MN626314016PF	63	0 ÷ 16	G1/4	CL2.5	1
MN626314025PF	63	0 ÷ 25	G1/4	CL2.5	1
MN626314040PF	63	0 ÷ 40	G1/4	CL2.5	1
MN626314060PF	63	0 ÷ 60	G1/4	CL2.5	1
MN626314100PF	63	0 ÷ 100	G1/4	CL2.5	1
MN626314160PF	63	0 ÷ 160	G1/4	CL2.5	1
MN626314250PF	63	0 ÷ 250	G1/4	CL2.5	1
MN626314315PF	63	0 ÷ 315	G1/4	CL2.5	1
MN626314400PF	63	0 ÷ 400	G1/4	CL2.5	1



Manometri e vuotometri cassa metallica

Gauges and vacuum gauges steel case

Manometer und Vakuummeter Stahl Gehäuse

Dati tecnici manometri a secco attacco posteriore con staffa (serie MN64)

Gauges center back connection with clamp technical data (MN64 series)

Technischen Daten der Manometer zuruck Angriff für Paneeleinbau (Serie MN64)

Applicazioni

Per aria o acqua adatti a tutti gli impieghi dove non ci sono agenti corrosivi.
Pneumatica, idraulica, condizionamento, medicali.

Descrizione

Manometro costruito secondo Norme UNI EN 837.1 Cassa Metallica Verniciata NERA
IP55 dn 40 - 50 - 63 mm trasparente in Plexiglass. Anello cromato, Perno e movimento in OTTONE attacco POSTERIORE con STAFFA (ISO 228 - ISO 7/1) Quadrante in alluminio fondo bianco scala BAR nera e PSI rossa (doppia scala esclusi mano vuotometri). Classe di precisione 2,5 - 1,6% - Lancetta in Alluminio.

Esercizio

Temperatura d'esercizio -10 / +60 °C
Sovrappressione 25% fino a 60 bar, 15% oltre

Varianti

Scale Normalizzate: Vuotometro -1 / 0 Bar+CmHg; Manovuotometro -1+0,6; -1+1,5; -1+3; -1+5; -1+9; -1+15 solo Bar; 0,6; 1; 1,6; 2,5; 4; 6; 10; 12; 16; 25; 40; 60; 100; 160; 250; 315; 400 Bar + Psi

Opzioni prodotto

Filetto NPT ANSI B.1.20.1, Cassa Inox AISI 304 o Cromata, Sgrassati per uso ossigeno, scale e/o attacchi personalizzati, loghi, settori colorati, lancetta rossa ISPEL di riferimento, saldatura forte per alte temperature.

Applications

Suitable for all process gaseous and liquid don't attack copper alloy parts. Pneumatics, Heating, ventilation, air-conditioning, Medical engineering.

Description

Pressure gauge made according UNI EN 837.1 norms BLACK steel case dial
40 - 50 - 63 mm. Plexiglas windows, Chromed plated ring, BRASS movement and pivot BACK (ISO 228 - ISO 7/1) connection with U-CLAMP - Aluminum dial White background Black BAR scale and Red PSI one (double scale except compoud gauge) - Accuracy 2,5 - 1,6% - Aluminum index.

Working

Operating temperature +14 / +140 °F
Overpressure 25% until 60 bar, 15% over

Variants

Normalized scale: gauge compound -1 / 0 Bar+CmHg; Water pressure gauge -1+0,6; -1+1,5; -1+3; -1+5; -1+9; -1+15 solo Bar; 0,6; 1; 1,6; 2,5; 4; 6; 10; 12; 16; 25; 40; 60; 100; 160; 250; 315; 400 Bar + Psi

Product options

NPT ANSI B.1.20.1 thread, GLASS windows, Clean for oxygen service, customize range, scale or logo; Colored sector, red index, welding for high temperature.

Anwendungen

Für Luft oder Wasser geeignet für alle Anwendungen, bei denen es ätzend.
Pneumatik, Hydraulik, Klimaanlage, medical.

Beschreibung

Gebaut nach UNI EN 837.1, Bargeld Metallica SCHWARZ lackiert IP55 dn 40 - 50 - 63 mm. Transparent Plexiglas. Stift und Bewegung in MESSING.
ZURÜCK Angriff mit Paneeleinbau (ISO 228 - ISO 7/1). Wählen Aluminium weiß, Maßstab BAR schwarz, rot für PSI (zwei Skalen Vakuummeter ausgeschlossen). Genauigkeitsklasse 2,5 auf 1,6% - Hand aus Aluminium.

Betriebs

Betriebstemperatur -10 / +60 °C
Überdruck bis 60 bar, mehr als 15%

Varianten

Maßstab normalisierten Vakuummeter -1 / 0 Bar+CmHg; Manovuotometer -1+0,6; -1+1,5; -1+3; -1+5; -1+9; -1+15 nur Bar; 0,6; 1; 1,6; 2,5; 4; 6; 10; 12; 16; 25; 40; 60; 100; 160; 250; 315; 400 Bar + PSI

Produkt-Optionen

NPT ANSI B.1.20.1 Gewinde, Edelstahl AISI 304 bar oder Chrom, Entfetten Verwendung Sauerstoff, Treppen und / oder Anhänger individuelle Logos, farbigen Sektoren, rot gefärbt Hand ISPEL, starke Schweißen für Hochtemperaturanwendungen.

MN 64



Manometri a secco attacco posteriore con staffa

Gauges center back connection with clamp
Manometer zuruck Angriff für Paneleinbau

Ø	B	D	D1	H	G"	CH		Kg
40	25	39	43.3	41	R1/8	11		0.099
50	29	52	57	52	R1/4	14		0.145
63	29	62	68	50	G1/4	14		0.174

Codice/Code	Ø	Scala (bar) Range	Attacco" Connection"	Precisione Accuracy	
-------------	---	-------------------	----------------------	---------------------	--

VUOTOMETRO - VACUUM GAUGE - Vakuummeter

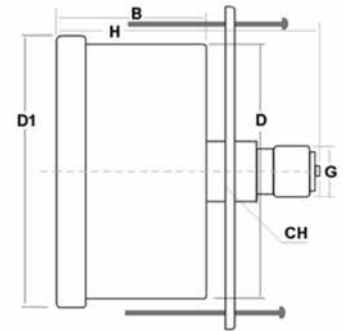
MN644018099PS	40	-1 ÷ 0	R1/8	CL2.5	1
MANOMETRI - GAUGES - Manometer					
MN644018001PS	40	0 ÷ 1	R1/8	CL2.5	1
MN644018106PS	40	0 ÷ 1.6	R1/8	CL2.5	1
MN644018205PS	40	0 ÷ 2.5	R1/8	CL2.5	1
MN644018004PS	40	0 ÷ 4	R1/8	CL2.5	1
MN644018006PS	40	0 ÷ 6	R1/8	CL2.5	1
MN644018010PS	40	0 ÷ 10	R1/8	CL2.5	1
MN644018012PS	40	0 ÷ 12	R1/8	CL2.5	1
MN644018016PS	40	0 ÷ 16	R1/8	CL2.5	1

VUOTOMETRO - VACUUM GAUGE - Vakuummeter

MN645014099PS	50	-1 ÷ 0	R1/4	CL2.5	1
MANOMETRI - GAUGES - Manometer					
MN645014001PS	50	0 ÷ 1	R1/4	CL2.5	1
MN645014106PS	50	0 ÷ 1.6	R1/4	CL2.5	1
MN645014205PS	50	0 ÷ 2.5	R1/4	CL2.5	1
MN645014004PS	50	0 ÷ 4	R1/4	CL2.5	1
MN645014006PS	50	0 ÷ 6	R1/4	CL2.5	1
MN645014010PS	50	0 ÷ 10	R1/4	CL2.5	1
MN645014012PS	50	0 ÷ 12	R1/4	CL2.5	1
MN645014016PS	50	0 ÷ 16	R1/4	CL2.5	1
MN645014025PS	50	0 ÷ 25	R1/4	CL2.5	1

VUOTOMETRO - VACUUM GAUGE - Vakuummeter

MN646314099PS	63	-1 ÷ 0	G1/4	CL2.5	1
MANOMETRI - GAUGES - Manometer					
MN646314001PS	63	0 ÷ 1	G1/4	CL2.5	1
MN646314106PS	63	0 ÷ 1.6	G1/4	CL2.5	1
MN646314205PS	63	0 ÷ 2.5	G1/4	CL2.5	1
MN646314004PS	63	0 ÷ 4	G1/4	CL2.5	1
MN646314006PS	63	0 ÷ 6	G1/4	CL2.5	1
MN646314010PS	63	0 ÷ 10	G1/4	CL2.5	1
MN646314012PS	63	0 ÷ 12	G1/4	CL2.5	1
MN646314016PS	63	0 ÷ 16	G1/4	CL2.5	1



Manometri e vuotometri cassa metallica

Gauges and vacuum gauges steel case

Manometer und Vakuummeter Stahl Gehäuse

Dati tecnici manometri a secco attacco radiale (serie MN65)

Gauges bottom connection technical data (MN65 series)

Technischen Daten der Manometer radial Angriff (Serie MN65)

Applicazioni

Per aria o acqua adatti a tutti gli impieghi dove non ci sono agenti corrosivi.
Pneumatica, idraulica, condizionamento, medicali.

Descrizione

Manometro costruito secondo Norme UNI EN 837.1 Cassa Metallica Verniciata NERA IP55 dn 40 - 50 - 63 - 80 - 100 mm trasparente in Plexiglass. Perno e movimento in OTTONE attacco RADIALE (ISO 228 - ISO 7/1) Quadrante in alluminio fondo bianco scala BAR nera e PSI rossa (doppia scala esclusi mano vuotometri). Classe di precisione 2,5 - 1,6%. Lancetta in Alluminio.

Esercizio

Temperatura d'esercizio -10 / +60 °C
Sovrappressione 25% fino a 60 bar, 15% oltre

Varianti

Scale Normalizzate: Vuotometro -1 / 0 Bar+CmHg; Manovuotometro -1+0,6; -1+1,5; -1+3; -1+5; -1+9; -1+15 solo Bar; 0,6; 1; 1,6; 2,5; 4; 6; 10; 12; 16; 25; 40; 60; 100; 160; 250; 315; 400 Bar + Psi

Opzioni prodotto

Filetto NPT ANSI B.1.20.1, Cassa Inox AISI 304 o Cromata, Sgrassati per uso ossigeno, scale e/o attacchi personalizzati, loghi, settori colorati, lancetta rossa ISPESL di riferimento, saldatura forte per alte temperature. Attacco radiale ad ore 3/9/12.

Applications

Suitable for all process gaseous and liquid don't attack copper alloy parts. Pneumatics, Heating, ventilation, air-conditioning, Medical engineering.

Description

Pressure gauge made according UNI EN 837.1 norms BLACK steel case dial 40 - 50 - 63 - 80 - 100 mm. BRASS movement and pivot BOTTOM (ISO 228 - ISO 7/1) connection - Aluminum dial White background Black BAR scale and Red PSI one (double scale except compound gauge)
Accuracy 2,5 - 1,6% - Aluminum index.

Working

Operating temperature +14 / +140 °F
Overpressure 25% until 60 bar, 15% over

Variants

Normalized scale: gauge compound -1 / 0 Bar+CmHg; Water pressure gauge -1+0,6; -1+1,5; -1+3; -1+5; -1+9; -1+15 solo Bar; 0,6; 1; 1,6; 2,5; 4; 6; 10; 12; 16; 25; 40; 60; 100; 160; 250; 315; 400 Bar + Psi

Product options

NPT threads ANSI B.1.20.1, Case Stainless steel AISI 304 or Chrome, Degreased for oxygen, scale and / or personalized attacks, logos, colored sectors, hard welding for high-temperature bottom connection at 3 / 9 / 12 hours.

Anwendungen

Für Luft oder Wasser geeignet für alle Anwendungen, bei denen es ätzend.
Pneumatik, Hydraulik, Klimaanlage, medical.

Beschreibung

Gebaut nach UNI EN 837.1, Bargeld Metallica SCHWARZ lackiert IP55 dn 40 - 50 - 63 - 80 - 100 mm. Transparent Plexiglas. Stift und Bewegung in MESSING. ZURÜCK Angriff (ISO 228 - ISO 7/1). Wählen Aluminium weiß, Maßstab BAR schwarz, rot für PSI (zwei Skalen Vakuummeter ausgeschlossen). Genauigkeitsklasse 2,5 auf 1,6%. - Hand aus Aluminium.

Betriebs

Betriebstemperatur -10 / +60 °C
Überdruck bis 60 bar, mehr als 15%

Varianten

Maßstab normalisierten Vakuummeter -1 / 0 Bar+CmHg; Manovuotometer -1+0,6; -1+1,5; -1+3; -1+5; -1+9; -1+15 nur Bar; 0,6; 1; 1,6; 2,5; 4; 6; 10; 12; 16; 25; 40; 60; 100; 160; 250; 315; 400 Bar + Psi

Produkt-Optionen

NPT ANSI B.1.20.1 Gewinde, Edelstahl AISI 304 bar oder Chrom, Entfetten Verwendung Sauerstoff, Treppen und / oder Anhänger individuelle Logos, farbigen Sektoren, rot gefärbt Hand ISPESL, starke Schweißen für Hochtemperaturanwendungen. Radial Angriff 3/9/12 Stunden.

MN 65



Manometri a secco attacco radiale

Gauges bottom connection
Manometer radial Angriff

Codice/Code	Ø	Scala (bar) Range	Attacco" Connection"	Precisione Accuracy	
VUOTOMETRO - VACUUM GAUGE - Vakuummeter					
MN654018099R	40	-1 ÷ 0	R1/8	CL2.5	1
MANOMETRI - GAUGES - Manometer					
MN654018001R	40	0 ÷ 1	R1/8	CL2.5	1
MN654018106R	40	0 ÷ 1.6	R1/8	CL2.5	1
MN654018205R	40	0 ÷ 2.5	R1/8	CL2.5	1
MN654018004R	40	0 ÷ 4	R1/8	CL2.5	1
MN654018006R	40	0 ÷ 6	R1/8	CL2.5	1
MN654018010R	40	0 ÷ 10	R1/8	CL2.5	1
MN654018012R	40	0 ÷ 12	R1/8	CL2.5	1
MN654018016R	40	0 ÷ 16	R1/8	CL2.5	1
MN654018025R	40	0 ÷ 25	R1/8	CL2.5	1
MN654018040R	40	0 ÷ 40	R1/8	CL2.5	1
MN654018060R	40	0 ÷ 60	R1/8	CL2.5	1
MN654018100R	40	0 ÷ 100	R1/8	CL2.5	1
MN654018160R	40	0 ÷ 160	R1/8	CL2.5	1
MN654018250R	40	0 ÷ 250	R1/8	CL2.5	1
VUOTOMETRO - VACUUM GAUGE - Vakuummeter					
MN655014099R	50	-1 ÷ 0	R1/4	CL2.5	1
MANOMETRI - GAUGES - Manometer					
MN655014001R	50	0 ÷ 1	R1/4	CL2.5	1
MN655014106R	50	0 ÷ 1.6	R1/4	CL2.5	1
MN655014205R	50	0 ÷ 2.5	R1/4	CL2.5	1
MN655014004R	50	0 ÷ 4	R1/4	CL2.5	1
MN655014006R	50	0 ÷ 6	R1/4	CL2.5	1
MN655014010R	50	0 ÷ 10	R1/4	CL2.5	1
MN655014012R	50	0 ÷ 12	R1/4	CL2.5	1
MN655018012R	50	0 ÷ 12	R1/8	CL2.5	1
MN655014016R	50	0 ÷ 16	R1/4	CL2.5	1
MN655014025R	50	0 ÷ 25	R1/4	CL2.5	1
MN655014040R	50	0 ÷ 40	R1/4	CL2.5	1
MN655014060R	50	0 ÷ 60	R1/4	CL2.5	1
MN655014100R	50	0 ÷ 100	R1/4	CL2.5	1
MN655014160R	50	0 ÷ 160	R1/4	CL2.5	1
MN655014250R	50	0 ÷ 250	R1/4	CL2.5	1
VUOTOMETRO - VACUUM GAUGE - Vakuummeter					
MN656314099R	63	-1 ÷ 0	G1/4	CL1.6	1
MANOMETRI - GAUGES - Manometer					
MN656314066R	63	0 ÷ 0.6	G1/4	CL1.6	1
MN656314001R	63	0 ÷ 1	G1/4	CL1.6	1
MN656314106R	63	0 ÷ 1.6	G1/4	CL1.6	1
MN656314205R	63	0 ÷ 2.5	G1/4	CL1.6	1
MN656314004R	63	0 ÷ 4	G1/4	CL1.6	1
MN656314006R	63	0 ÷ 6	G1/4	CL1.6	1
MN656314010R	63	0 ÷ 10	G1/4	CL1.6	1
MN656314012R	63	0 ÷ 12	G1/4	CL1.6	1
MN656314016R	63	0 ÷ 16	G1/4	CL1.6	1
MN656314025R	63	0 ÷ 25	G1/4	CL1.6	1
MN656314040R	63	0 ÷ 40	G1/4	CL1.6	1
MN656314060R	63	0 ÷ 60	G1/4	CL1.6	1
MN656314100R	63	0 ÷ 100	G1/4	CL1.6	1
MN656314160R	63	0 ÷ 160	G1/4	CL1.6	1
MN656314250R	63	0 ÷ 250	G1/4	CL1.6	1
VUOTOMETRO - VACUUM GAUGE - Vakuummeter					
MN658038099R	80	-1 ÷ 0	G3/8	CL1.6	1
MANOMETRI - GAUGES - Manometer					
MN658038205R	80	0 ÷ 2.5	G3/8	CL1.6	1
MN658038004R	80	0 ÷ 4	G3/8	CL1.6	1
MN658038006R	80	0 ÷ 6	G3/8	CL1.6	1
MN658038010R	80	0 ÷ 10	G3/8	CL1.6	1
MN658038016R	80	0 ÷ 16	G3/8	CL1.6	1
VUOTOMETRO - VACUUM GAUGE - Vakuummeter					
MN651012099R	100	-1 ÷ 0	G1/2	CL1.6	1
MANOMETRI - GAUGES - Manometer					
MN651012001R	100	0 ÷ 1	G1/2	CL1.6	1
MN651012106R	100	0 ÷ 1.6	G1/2	CL1.6	1
MN651012205R	100	0 ÷ 2.5	G1/2	CL1.6	1
MN651012004R	100	0 ÷ 4	G1/2	CL1.6	1
MN651012006R	100	0 ÷ 6	G1/2	CL1.6	1
MN651012010R	100	0 ÷ 10	G1/2	CL1.6	1
MN651012016R	100	0 ÷ 16	G1/2	CL1.6	1
MN651012025R	100	0 ÷ 25	G1/2	CL1.6	1

Ø	A	B	D1
40	8	24	41
50	10	27	51
50	10	27	51
63	10	27	62
80	7	32.5	79
100	11	34.5	98.5

Ø	H	G"	CH	Kg
40	36.5	R 1/8	11	0.048
50	47	R 1/4	14	0.082
50	47	R 1/8	14	0.088
63	54	G1/4	14	0.099
80	69	G3/8	17	0.184
100	82	G1/2	22	0.297

