

### Dati tecnici ripartitori in alluminio

Aluminum manifolds technical data

Technischen Daten der Aluminium Verteiler

#### Descrizione

Ripartitori pneumatici progettati per fornire un sistema compatto ed altamente efficiente di controllo pneumatico. Tale sistema nasce con la logica necessità di integrazione sempre più spinta richiesta dai circuiti pneumatici, riducendo i costi relativi a materiali, montaggio e manutenzione.

#### Materiali

Alluminio

#### Trattamento

Barilatura

#### Max Pressione di lavoro

12 Bar

#### Temperatura di utilizzo

-20°C ÷ +130°C

#### Opzioni a richiesta

- Anodizzazione bianca, gialla, azzurra o nera
- Versioni speciali

#### Description

Pneumatic distributors designed to provide a compact and highly efficient pneumatic control. This system was created with the logical necessity of integration of pneumatic circuits, reducing costs of materials, installation and maintenance.

#### Materials

Aluminum

#### Treatment

Tumbling

#### Max working pressure

174 psi

#### Temperature range

-4°F ÷ +266°F

#### Options on request

- Anodization white, yellow, blue or black
- Special version

#### Beschreibung

Pneumatischer Verteiler konzipiert, um eine kompakte und hoch effiziente pneumatische Steuerung liefern. Dieses System wurde mit der logischen Notwendigkeit der Integration von pneumatischen Schaltungen erzeugt, wodurch Kosten für Material, Montage und Wartung.

#### Werkstoffen

Aluminium

#### Behandlung

Taumeln

#### Maximal Betriebsdruck

12 Bar

#### Betriebsdruck

-20°C ÷ +130°C

#### Optionen auf Anfrage

- Anodisieren weiß, gelb, blau oder schwarz
- Sonderausführungen

## Ripartitori in alluminio

Aluminium manifolds  
Verteilerblöcke

### RL 50



#### Ripartitore croce femmina

Cross female manifold  
Kreuzverteiler

Codice/Code	Rif.	A"	B	C	D	E	F	G	kg		
RL500018	fig.2	G1/8	17	25	16	4.5	15,2	0.5	0.015		10
RL501818	fig.1	G1/8	23	30	16	4.25	22		0.03		10
RL500014	fig.3	G1/4	21	30	18	4.25			0.03		10
RL501414	fig.2	G1/4	26	40	20	5.5	19	0.5	0.065		10
RL500038	fig.3	G3/8	30	40	20	5.25			0.055		10
RL503838	fig.2	G3/8	34	50	25	5.5	23	0.5	0.12		10
RL500012	fig.3	G1/2	37	50	30	6.5			0.135		10

Standard a magazzino burattati / tumbling standard available / Standard Lager Trommelsteine  
Su richiesta anodizzati / on demand anodized / auf Anfrage eloxiert

Fig. 1

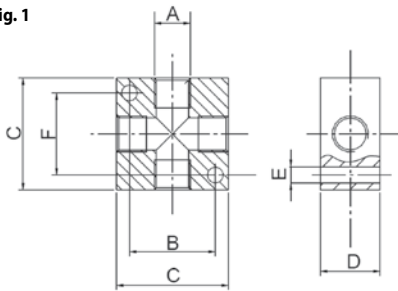


Fig. 2

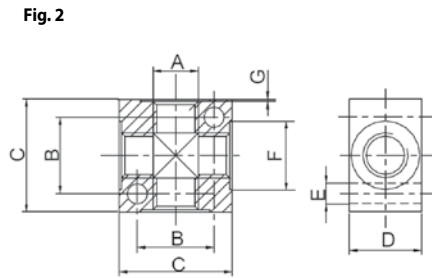
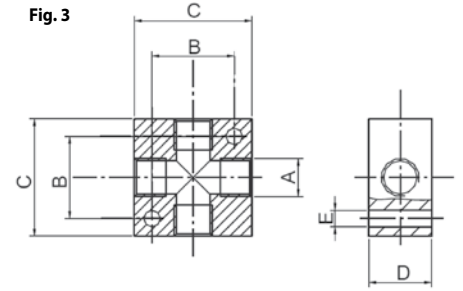


Fig. 3



### RL 51



#### Ripartitore uscite multiple da 1 lato

Manifold 1 side output  
Verteilerblock mit mehrere Ausgänge von einer Seite

#### 2 entrate 2 uscite / 2 inlets 2 outlets / 2 Eingänge 2 Ausgänge

Codice/Code	FIG.	A"	B"	D	E	F	G	H	L	M	K	
RL5118M502	1	G1/8	M5	15	15	45	22.5	3.5	20	15	4.25	5
RL51141802	1	G1/4	G1/8	15	30	60	30	4.5	30	20	5.25	5
RL51381802	1	G3/8	G1/8	18	30	66	33	4.5	40	20	5.25	5
RL51381402	1	G3/8	G1/4	18	36	72	36	6	40	20	6.5	5
RL51121402	1	G1/2	G1/4	22	36	80	40	6	40	28	6.5	5
RL51123802	1	G1/2	G3/8	25	40	90	45	6	40	28	6.5	5
RL51121202	1	G1/2	G1/2	30	40	100	50	6	40	28	6.5	5

#### 2 entrate 3 uscite / 2 inlets 3 outlets / 2 Eingänge 3 Ausgänge

Codice/Code	FIG.	A"	B"	D	E	F	G	H	L	M	K	
RL5118M503	3	G1/8	M5	15	15	60	22.5	3.5	20	15	4.25	5
RL51141803	3	G1/4	G1/8	15	30	90	30	4.5	30	20	5.25	5
RL51381803	2	G3/8	G1/8	18	30	96	33	4.5	30	20	5.25	5
RL51381403	2	G3/8	G1/4	18	36	108	36	6	30	20	6.5	5
RL51121403	2	G1/2	G1/4	22	36	116	40	6	40	28	6.5	5
RL51123803	2	G1/2	G3/8	25	40	130	45	6	40	28	6.5	5
RL51121203	2	G1/2	G1/2	30	40	140	50	6	40	28	6.5	5

#### 2 entrate 4 uscite / 2 inlets 4 outlets / 2 Eingänge 4 Ausgänge

Codice/Code	FIG.	A"	B"	D	E	F	G	H	L	M	K	
RL5118M504	3	G1/8	M5	15	15	75	22.5	3.5	20	15	4.25	5
RL51141804	3	G1/4	G1/8	15	30	120	30	4.5	30	20	5.25	5
RL51381804	2	G3/8	G1/8	18	30	126	33	4.5	30	20	5.25	5
RL51381404	2	G3/8	G1/4	18	36	144	36	6	30	20	6.5	5
RL51121404	2	G1/2	G1/4	22	36	152	40	6	40	28	6.5	5
RL51123804	2	G1/2	G3/8	25	40	170	45	6	40	28	6.5	5
RL51121204	2	G1/2	G1/2	30	40	180	50	6	40	28	6.5	5

**2 entrate 5 uscite / 2 inlets 5 outlets / 2 Eingänge 5 Ausgänge**

Codice/Code	FIG.	A"	B"	D	E	F	G	H	L	M	K	
<b>RL5118M505</b>	3	G1/8	M5	15	15	90	22.5	3.5	20	15	4.25	5
<b>RL51141805</b>	3	G1/4	G1/8	15	30	150	30	4.5	30	20	5.25	5
<b>RL51381805</b>	2	G3/8	G1/8	18	30	156	33	4.5	30	20	5.25	5
<b>RL51381405</b>	2	G3/8	G1/4	18	36	180	36	6	30	20	6.5	5
<b>RL51121405</b>	2	G1/2	G1/4	22	36	188	40	6	40	28	6.5	5
<b>RL51123805</b>	2	G1/2	G3/8	25	40	210	45	6	40	28	6.5	5
<b>RL51121205</b>	2	G1/2	G1/2	30	40	220	50	6	40	28	6.5	5

**2 entrate 6 uscite / 2 inlets 6 outlets / 2 Eingänge 6 Ausgänge**

Codice/Code	FIG.	A"	B"	D	E	F	G	H	L	M	K	
<b>RL5118M506</b>	3	G1/8	M5	15	15	105	22.5	3.5	20	15	4.25	5
<b>RL51141806</b>	3	G1/4	G1/8	15	30	180	30	4.5	30	20	5.25	5
<b>RL51381806</b>	2	G3/8	G1/8	18	30	186	33	4.5	30	20	5.25	5
<b>RL51381406</b>	2	G3/8	G1/4	18	36	216	36	6	30	20	6.5	5
<b>RL51121406</b>	2	G1/2	G1/4	22	36	224	40	6	40	28	6.5	5
<b>RL51123806</b>	2	G1/2	G3/8	25	40	250	45	6	40	28	6.5	5
<b>RL51121206</b>	2	G1/2	G1/2	30	40	260	50	6	40	28	6.5	5

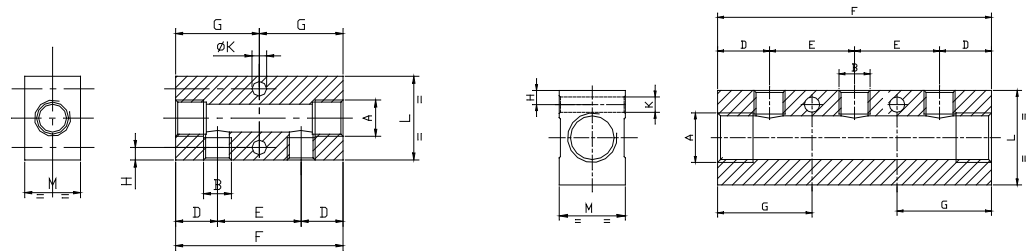


Fig. 1

Fig. 2

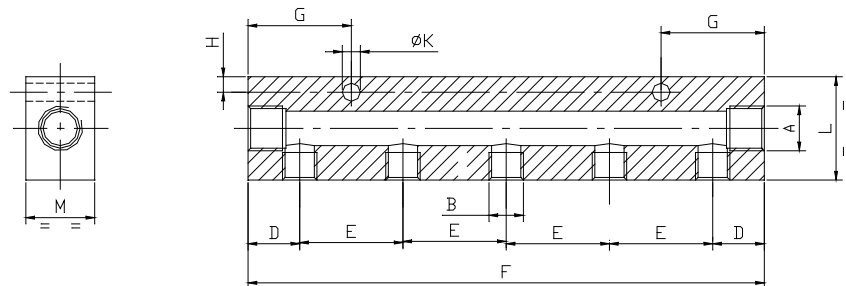


Fig. 3

Standard a magazzino burattati / tumbling standard available / Standard Lager Trommelsteine  
Su richiesta anodizzati / on demand anodized / auf Anfrage eloxiert

## Ripartitori in alluminio

Aluminium manifolds  
Verteilerblöcke

RL 52



### Ripartitore uscite multiple da 2 lati

Manifold 2 side output  
Verteilerblock mit mehrere Ausgänge von zwei Seite

#### 2 entrate 2+2 uscite / 2 inlets 2+2 outlets / 2 Eingänge 2+2 Ausgänge

Codice/Code	FIG.	A"	B"	D	E	F	G	H	L	M	K	
RL5218M522	1	G1/8	M5	15	15	45	22.5	3.5	20	15	4.25	5
RL52141822	1	G1/4	G1/8	15	30	60	30	4.5	30	20	5.25	5
RL52381822	1	G3/8	G1/8	18	30	66	33	4.5	40	20	5.25	5
RL52381422	1	G3/8	G1/4	18	36	72	36	6	40	20	6.5	5
RL52121422	1	G1/2	G1/4	22	36	80	40	6	40	28	6.5	5
RL52123822	1	G1/2	G3/8	25	40	90	45	6	40	28	6.5	5
RL52121222	1	G1/2	G1/2	30	40	100	50	6	40	28	6.5	5

#### 2 entrate 3+3 uscite / 2 inlets 3+3 outlets / 2 Eingänge 3+3 Ausgänge

Codice/Code	FIG.	A"	B"	D	E	F	G	H	L	M	K	
RL5218M533	2	G1/8	M5	15	15	60	22.5	3.5	20	15	4.25	5
RL52141833	2	G1/4	G1/8	15	30	90	30	4.5	30	20	5.25	5
RL52381833	2	G3/8	G1/8	18	30	96	33	4.5	40	20	5.25	5
RL52381433	2	G3/8	G1/4	18	36	108	36	6	40	20	6.5	5
RL52121433	2	G1/2	G1/4	22	36	116	40	6	40	28	6.5	5
RL52123833	2	G1/2	G3/8	25	40	130	45	6	40	28	6.5	5
RL52121233	2	G1/2	G1/2	30	40	140	50	6	40	28	6.5	5

#### 2 entrate 4+4 uscite / 2 inlets 4+4 outlets / 2 Eingänge 4+4 Ausgänge

Codice/Code	FIG.	A"	B"	D	E	F	G	H	L	M	K	
RL5218M544	2	G1/8	M5	15	15	75	22.5	3.5	20	15	4.25	5
RL52141844	2	G1/4	G1/8	15	30	120	30	4.5	30	20	5.25	5
RL52381844	2	G3/8	G1/8	18	30	126	33	4.5	40	20	5.25	5
RL52381444	2	G3/8	G1/4	18	36	144	36	6	40	20	6.5	5
RL52121444	2	G1/2	G1/4	22	36	152	40	6	40	28	6.5	5
RL52123844	2	G1/2	G3/8	25	40	170	45	6	40	28	6.5	5
RL52121244	2	G1/2	G1/2	30	40	180	50	6	40	28	6.5	5

#### 2 entrate 5+5 uscite / 2 inlets 5+5 outlets / 2 Eingänge 5+5 Ausgänge

Codice/Code	FIG.	A"	B"	D	E	F	G	H	L	M	K	
RL5218M555	2	G1/8	M5	15	15	90	22.5	3.5	20	15	4.25	5
RL52141855	2	G1/4	G1/8	15	30	150	30	4.5	30	20	5.25	5
RL52381855	2	G3/8	G1/8	18	30	156	33	4.5	40	20	5.25	5
RL52381455	2	G3/8	G1/4	18	36	180	36	6	40	20	6.5	5
RL52121455	2	G1/2	G1/4	22	36	188	40	6	40	28	6.5	5
RL52123855	2	G1/2	G3/8	25	40	210	45	6	40	28	6.5	5
RL52121255	2	G1/2	G1/2	30	40	220	50	6	40	28	6.5	5

#### 2 entrate 6+6 uscite / 2 inlets 6+6 outlets / 2 Eingänge 6+6 Ausgänge

Codice/Code	FIG.	A"	B"	D	E	F	G	H	L	M	K	
RL5218M566	2	G1/8	M5	15	15	105	22.5	3.5	20	15	4.25	5
RL52141866	2	G1/4	G1/8	15	30	180	30	4.5	30	20	5.25	5
RL52381866	2	G3/8	G1/8	18	30	186	33	4.5	40	20	5.25	5
RL52381466	2	G3/8	G1/4	18	36	216	36	6	40	20	6.5	5
RL52121466	2	G1/2	G1/4	22	36	224	40	6	40	28	6.5	5
RL52123866	2	G1/2	G3/8	25	40	250	45	6	40	28	6.5	5
RL52121266	2	G1/2	G1/2	30	40	260	50	6	40	28	6.5	5

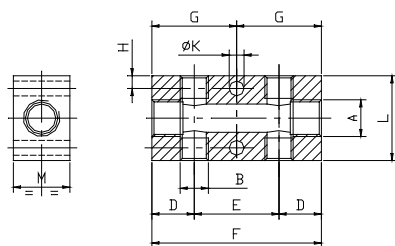


Fig. 1

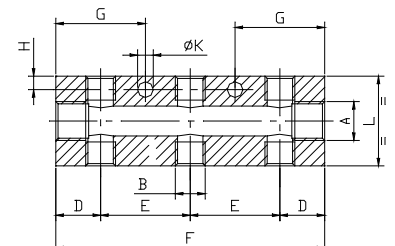


Fig. 2

Standard a magazzino burattati / tumbling standard available / Standard Lager Trommelsteine  
Su richiesta anodizzati / on demand anodized / auf Anfrage eloxiert